

AKVIS ArtWork

Reviewed by Geetesh Bajaj, November 27th 2008

Introduction

AKVIS ArtWork, a Photoshop compatible plug-in transforms your pictures by imparting professional painting styles to them. Change the default settings through convenient sliders, and you can end up with any number of painted styles. A special tool brush defines the guiding lines, and a virtual painter can convert any image into a painting directing the strokes to follow the lines within the actual picture. You can add an artist's signature, and there is a choice between a flat background and a rough surface (canvas, paper, etc.).

AKVIS ArtWork is from **AKVIS**, a company based in Russia that specializes in graphics programs. Apart from ArtWork, AKVIS also creates other Photoshop compatible plug-ins like Retoucher, Chameleon, Stamp, Sketch, Enhancer, Decorator, Magnifier, Noise Buster, SmartMask, LightShop, ArtSuite and Coloriage.

You can download a free 10 day trial version of [ArtWork from the AKVIS site...](#)

How To Use

Follow the steps to use AKVIS ArtWork:

1. Open any image in an image editor such as Adobe Photoshop.
2. Choose Filter | AKVIS | ArtWork, as shown in **Figure 1**.



Figure 1: AKVIS ArtWork

3. This opens the AKVIS ArtWork interface, that you can see in **Figure 2** below.

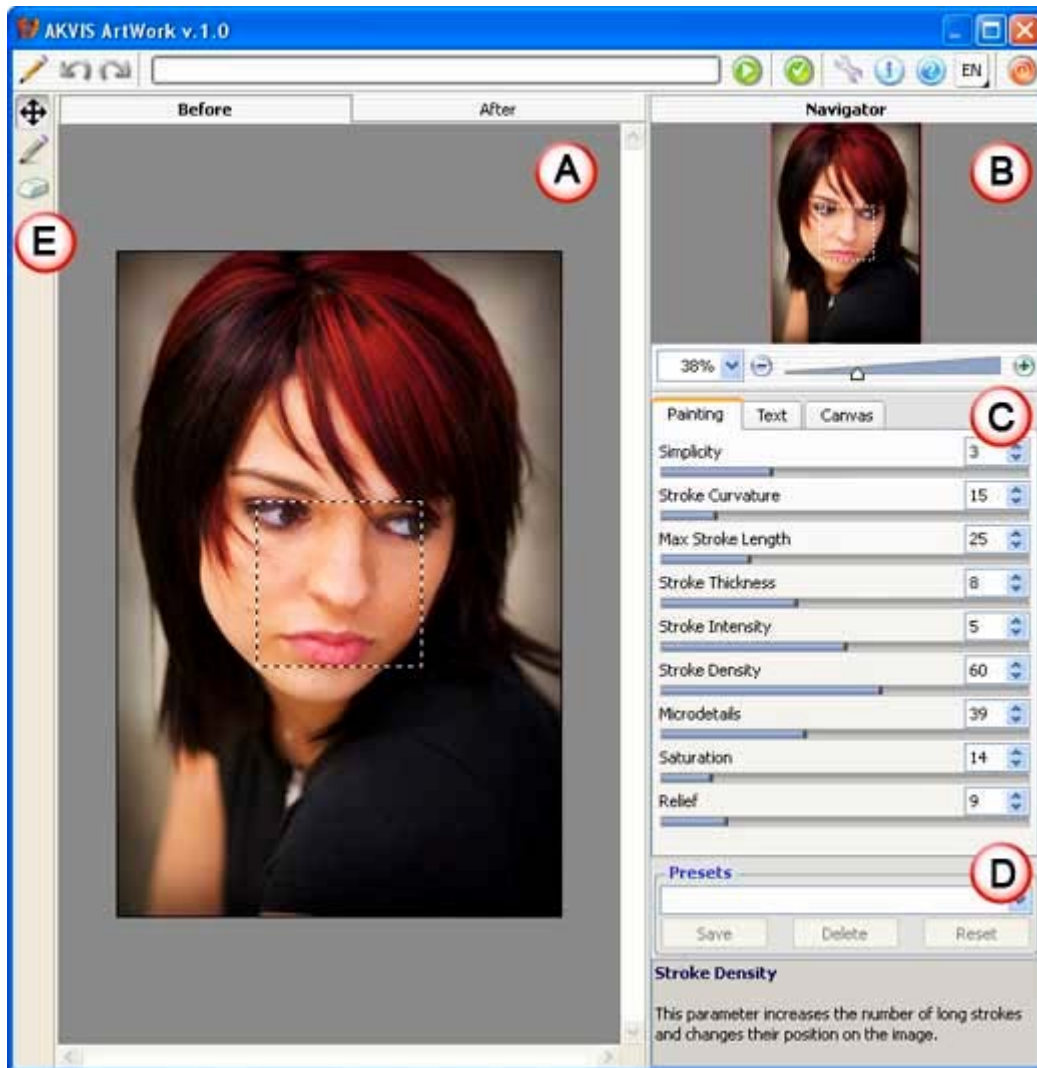


Figure 2: AKVIS ArtSuite interface

The interface is explained below:

- A. **Preview** has two tabs -- **Before** and **After**, which show the original and changed images.
- B. On the top right, you'll find the **Navigator**.
- C. Here you can see three tabs which are explained below:

Painting allows to tweak photo-to-paint conversion parameters such as stroke length, stroke thickness, etc.

Text here you can add any text such as artists name.

Canvas choose between a flat background and a rough surface such as canvas, paper, etc. to give your painting a realistic effect.

- D. **Presets** allows you to save the changes you made which can be used in future.
- E. Here you can see **Stroke Direction** button which can activates the guiding lines drawing tool and the **Eraser** tool used to erase the guiding lines, either partially or fully.

4. Once done apply the changes within the plug-in press the Apply button.



5. This applies and creates a preview of the image. If you want to make more changes, you can change the Painting settings. You can preview the changed image in the After tab, as shown in **Figure 3**.

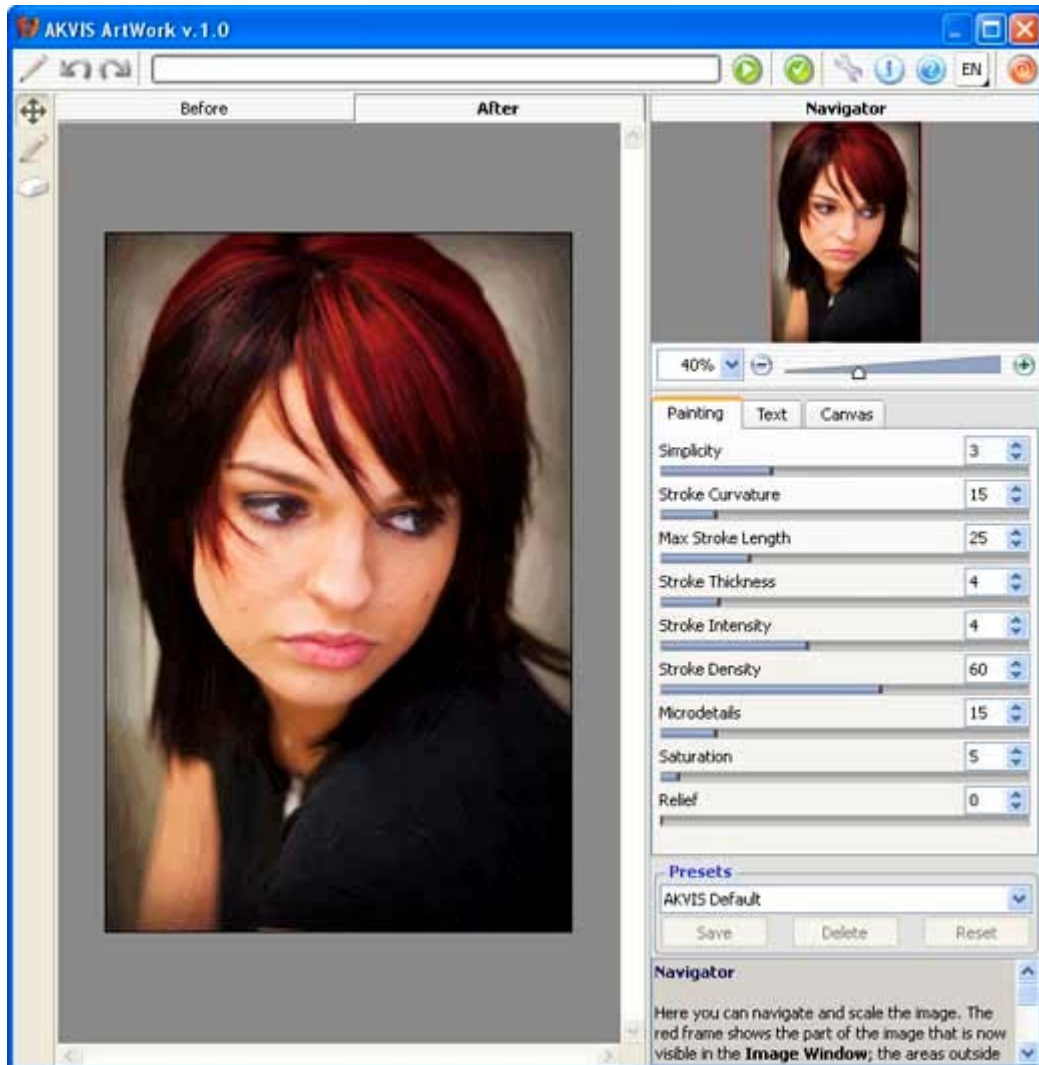


Figure 3: Preview the changes

6. Once you're done with playing with the effect, apply the result to the image by pressing the Apply icon (see icon below) to return to the image editor.



Note: Although the instructions above showed how you can use AKVIS ArtWork as a Photoshop plug-in, the product also works in the same way in standalone mode -- just launch the application through its icon in the AKVIS ArtWork group in your Windows Start Menu.

Here are some before and after samples:



Specifications

Photoshop Versions:	5+
Platforms:	Windows, Mac
Site:	AKVIS
Price:	US\$72 and above
Trial Version:	10 days

Source: <http://www.indezine.com/products/photoshop/plugin/akvisartwork.html>